

State of Wyoming Corner Record

(In compliance with the CORNER PERPETUATION AND FILING ACT, Wyoming Statutes, 1997 Section 33-29-140 et. seq., and the Rules and Regulations of the Board of Professional Engineers and Professional Land Surveyors)

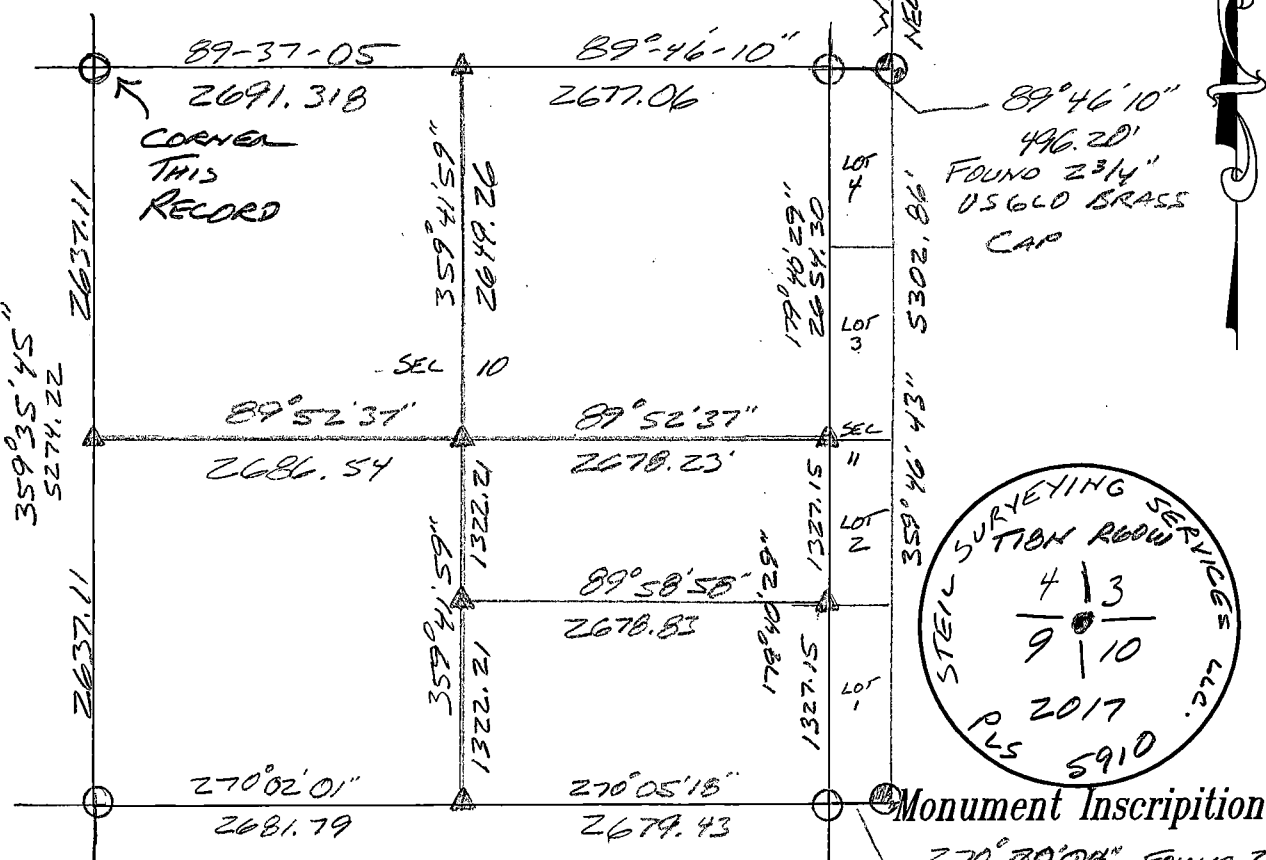
Reverse side of this form may be used if more space is needed.

Record of original survey and citation of source of historical information (if corner is lost or obliterated). Describe corner monumentation evidence found and/or monument and accessories established to perpetuate the location of corner. Sketch of relative location of monument, accessories, and reference points with course and distance to corner(s) (if determined in this survey). Method and rationale for reestablishment of lost or obliterated corner.

RECORD: SET A LIMESTONE 24X13X4, 18 INCHES DEEP MARKED WITH 5 NOTCHES ON SOUTH SIDE, AND 3 NOTCHES ON EAST SIDE FOR CORNER TO SECTIONS 3, 4, 9 AND 10.
MONUMENT FOUND: FOUND NOTHING

MONUMENT SET: SET A 5/8" X 24" REBAR WITH A 3/4" ALUMINUM CAP PROJECTING 0.6' ABOVE GROUND SURFACE. HELD AN N-E-W FENCE CORNER AS BEST AVAILABLE EVIDENCE.

REFERENCES: MONUMENT LIES 6" EAST OF THE ROUND STEEL CORNER POST.



REC# #: 726060
 RECORDED 3/1/2018 AT 9:40 AM BK# 2576 PG# 1590
 Debra K. Lee, CLERK OF LARAMIE COUNTY, WY PAGE 1 OF 1

Date of Field Work: 11-20-17 Office Reference: 17289

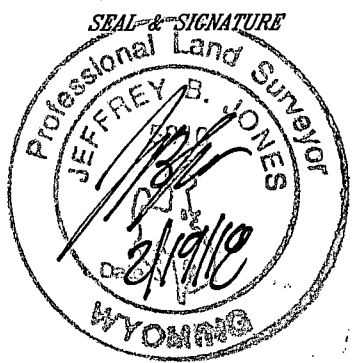
Cross Index Plat

	1	2	3	4	5	6	7	8	9	10	11	12	13	14	15	16	17	18	19	20	21	22	23	24	25
A																									
B																									
C																									
D																									
E																									
F																									
G																									
H																									
J																									
K																									
L																									
M																									
N																									
O																									
P																									
Q																									
R																									
S																									
T																									
U																									
V																									
W																									
X																									
Y																									
Z																									

Firm/Agency, Address

STEEL SURVEYING SERVICES LLC
 1102 WEST 19th STREET
 CHEYENNE WY 82001
 Telephone Number: (307) 634-7273

This corner record was prepared by me or under my direction and supervision.



Corner Name: NORTHWEST COR. Section 10, T 18 N, R 60 W, 6th P.M. Cross-Index No.: E-13
 County: LARAMIE Wyoming